

Monthly Weather Summary in Thailand November 2015

In November 2015, a pattern of high pressure area from China extending to cover upper Thailand was propagated eastward to dominate the South China Sea and it was weak during the middle of the month resulting in an overall mild winter across Thailand with intermittent cool weather in the northern and northeastern parts. Mean monthly temperature of this November was anomalous warmth in all parts of the country in particular across the northern and northeastern part where notable warmth exceed 2.0° C above normal. For rainfall, with the passage of the westerly trough over upper northern part coupled with the easterly wave moving through lower northern, central and eastern parts, upper Thailand experienced unusual rainfall periodically during the beginning and the middle of the month. In southern part, due to the prevailing of the northeast monsoon over the Gulf of Thailand and southern part almost the whole month and strengthened during late month accompanied with the prevailing of the easterly wind for few days causing plentiful of rainfall mainly along the east coast. Monthly rainfall was above normal in northeastern part 0.3 mm (2%), central 11.6 mm (31%), eastern 33.7 mm (63%) whereas that of below normal in northern part 0.4 mm (1%), southern part (east coast) 37.5 mm (10%) and southern part (west coast) 12.1 mm (6%).

1 – 10 November: The ridge of high pressure area from China extended to cover upper Thailand and the South China Sea coupled with the prevailing of the moderate northeast monsoon over the Gulf of Thailand and southern part with the passage of the westerly trough over the upper northern part during 3 and 4 November and the easterly wave over the lower northeastern, central and eastern parts during 6 and 7 November. Besides, the low pressure cell covered the lower southern part and the easterly wind prevailed over the Gulf of Thailand and southern part for few days. These caused cool weather in most of areas of the northern and northeastern parts during the first half of the period then increasing in temperature but cool weather persisted in upper northern part while cool weather was found for few days in the rest parts. The lowest minimum temperature was 17.2 °C at Umphang in Tak province on November 3 and 8.0 °C over the area of mountaintop at Doi Inthanon in Chiang Mai on November 1. For rainfall, rainfall in upper Thailand was mainly observed during the second half of the period. The maximum daily rainfall was 96.3 mm at Chiang Klang in Nan province on 10 November. In southern part, widespread rain with heavy to very heavy rainfall was observed along the east coast while scattered to fairly widespread rain with isolated heavy rainfall along the west coast. The highest daily rainfall was 120.1 mm at Ranot in Songkhla province on November 1.

11 – 20 November: The high pressure area covering the northeastern part and the South China Sea was weak and the another ridge of moderate high pressure area extending to cover the northern and northeastern part and the South China Sea during late period coupled with the prevailing of the easterly wind over the Gulf of Thailand throughout the period and the passage of the westerly trough through the upper northern part during early period. Under these influences, temperature relatively increased but cool weather remained in the upper portion of the northern part and some areas of the northeastern part. The lowest minimum temperature was 16.4 °C at Mae Sariang in Mae Hong Son province on November 18 and 8.5 °C over the area of mountaintop at Doi Inthanon in Chiang Mai on November 10 and 11. For rainfall, unseasonable rainfall was observed in upper Thailand with the maximum daily rainfall of 96.0 mm at Klong Yai in Trat province on November 16. In southern part, scattered to fairly widespread rain with heavy to very heavy rainfall was found with the highest daily rainfall of 95.5 mm at Pa Bon in Phatthalung province on November 13.

21 – 30 November: Under the influence of the moderate high pressure area covering upper Thailand and the South China Sea and the another ridge of active high pressure area extending to cover the mention areas during the second half of the period, the weather were generally cool in the northern and northeastern parts throughout the period with cold weather in some areas of upper northern part. The minimum temperature of 13.9 °C was recorded at Mae Sariang in Mae Hong Son province on November 23 and it dropped to 6.5 °C at Doi Ang Khang, Fang in Chiang Mai province on November 22 and 23. Upper Thailand received scanty rain, the maximum daily rainfall was 14.3 at Bang Krathum in Phitsanulok province on November 21. In southern part, with the effect of the moderate easterly wind prevailing over the Gulf of Thailand and southern part during the first half of the period and the active northeast monsoon blowing over the mention area during the second half of the period. It induced scattered to fairly widespread rain with heavy to very heavy rainfall in some areas of the east coast while isolate to widely scattered rain was found along the west coast. Flash floods occurred at Phatthalung and Trang province on November 24 and at Nakhon Si Thammarat province on November 29. Gusty wind occurred at Phatthalung province on November 29 with strong wind wave at Nakhon Si Thammarat province on November 29. The maximum daily rainfall was 200.9 mm at Ban Na San in Surat Thani province on November 29.

Note : Rainfall, temperatures and natural disasters in this report were updated up to December 3, 2015.

Monthly Current Report
Rainfall and Accumulative Rainfall
November 2015

Northern Thailand

Station	Temperature (°c)		Rainfall (mm)		Accumulative rainfall (mm) Since 1 January	
	Mean	Above or below normal	Actual	Above or below normal	Actual	Above or below normal
Chiang Rai	24.6	2.4	17.7	-41.5	1395.9	-280.6
Mae Hong Son	25.1	1.1	100.3	55.4	1052.3	-229.7
Phayao	25.0	2.3	46.6	9.3	798.7	-327.4
Chiang Mai	26.8	2.8	79.2	25.3	826.9	-287.8
Tha Wang Pha	25.5	2.4	49.0	21.4	1328.4	-68.7
Nan	26.5	2.6	11.8	-6.3	1056.3	-169.2
Lamphun	26.4	2.5	67.3	23.2	1075.4	79.0
Lampang	26.9	2.7	7.9	-21.6	887.1	-151.4
Mae Sariang	25.8	1.9	15.9	-6.2	1067.8	-60.4
Phrae	27.0	2.6	2.0	-23.6	858.1	-248.9
Uttaradit	28.8	2.9	11.3	-15.4	833.7	-532.9
Bhumibol Dam	27.2	2.4	24.0	-20.8	773.6	-262.6
Tak	27.7	2.5	37.3	-17.3	753.5	-302.5
Mae Sot	27.0	2.6	1.5	-22.2	1560.8	99.1
Umphang	24.1	2.1	27.5	2.3	1347.7	-108.5
Phitsanulok	28.6	2.1	91.7	58.3	885.4	-420.5
Lom Sak	27.9	2.5	23.1	9.2	770.3	-268.3
Phetchabun	28.3	2.9	4.1	-7.5	944.4	-181.2
Wichian Buri	28.6	2.3	5.0	-15.3	1132.7	-83.6
Kamphaeng Phet	28.3	2.4	27.4	-14.6	982.2	-315.7
Over the area	26.8	2.4	32.5	-0.4 -1%	1016.6	-206.1 -17%

Northeastern Thailand

Station	Temperature (°c)		Rainfall (mm)		Accumulative rainfall (mm) Since 1 January	
	Mean	Above or below normal	Actual	Above or below normal	Actual	Above or below normal
Nong Khai	27.8	3.2	15.8	0.6	1680.2	76.3
Loei	26.2	2.6	23.0	3.0	877.5	-354.7
Udon Thani	27.4	2.5	7.4	-2.9	1211.2	-204.3
Nakhon Phanom	27.6	3.2	6.5	-3.2	2142.6	-199.4
Sakon Nakhon	26.9	2.5	40.5	28.6	1441.2	-198.2
Mukdahan	27.3	2.9	18.8	5.5	1168.1	-309.3
Khon Kaen	27.4	2.4	42.6	26.7	1006.1	-236.6
Kosum Phisai	27.9	2.6	1.3	-16.8	889.1	-371.5
Roi Et	27.8	2.9	19.6	4.4	1051.7	-288.2
Chaiyaphum	28.4	2.8	3.0	-16.0	919.3	-213.8
Ubon Ratchathani	28.2	2.8	35.8	13.2	1329.9	-250.8
Tha Tum	27.8	2.4	20.5	-0.5	1062.5	-324.4
Surin	27.8	2.5	9.8	-18.9	1260.9	-169.4
Nakhon Ratchasima	28.2	2.8	17.3	-6.6	1167.8	99.0
Chok Chai	27.7	2.6	31.3	1.9	1048.6	-23.0
Nang Rong	27.2	2.2	23.2	-14.0	1186.6	-3.9
Over the area	27.6	2.7	19.8	0.3 2%	1215.2	-185.8 -13%

- NOTES :
- 1) Mean temperature is the average of daily dry-bulb temperature
 - 2) "T" is trace, rainfall amount less than 0.1 mm.
 - 3) "blank" is incomplete data.
 - 4) Temperature and rainfall are preliminary data.

Monthly Current Report
Rainfall and Accumulative Rainfall
November 2015

Central Thailand

Station	Temperature (°c)		Rainfall (mm)		Accumulative rainfall (mm) Since 1 January	
	Mean	Above or below normal	Actual	Above or below normal	Actual	Above or below normal
Nakhon Sawan	28.6	2.1	30.8	3.4	786.7	-358.4
Bua Chum	28.0	2.3	26.7	4.6	988.2	-94.6
Lop Buri	28.9	1.8	163.8	130.7	1177.2	56.6
Suphan Buri	28.9	2.1	71.7	27.6	960.6	-8.1
Thong Pha Phum	27.4	2.1	32.0	6.4	1494.7	-287.1
Kanchanaburi	28.9	2.5	13.3	-45.3	966.5	-83.7
Bangkok Airport	29.4	1.7	17.4	-19.6	1234.0	-134.8
Bangkok Metropolis	29.5	1.7	34.9	-14.6	1867.4	225.5
Over the area	28.7	2.0	48.8	11.6 31%	1184.4	-85.6 -7%

Eastern Thailand

Station	Temperature (°c)		Rainfall (mm)		Accumulative rainfall (mm) Since 1 January	
	Mean	Above or below normal	Actual	Above or below normal	Actual	Above or below normal
Prachin Buri	29.5	2.1	41.2	9.5	1640.2	-178.1
Kabin Buri	28.2	1.5	31.2	2.1	1399.7	-193.2
Aranyaprathet	28.8	2.1	48.1	12.6	982.4	-357.6
Chon Buri	29.8	2.2	19.6	-29.2	995.1	-295.0
Ko Sichang	28.5	1.3	64.0	3.4	823.1	-387.3
Pattaya	28.1	1.4	139.3	67.2	1029.7	-72.7
Sattahip	27.8	0.9	82.2	6.1	1192.2	-63.9
Rayong	28.3	1.1	108.5	57.7	1408.0	30.7
Chanthaburi	28.7	1.8	98.9	44.4	2753.5	-233.9
Khlong Yai	28.2	0.9	236.7	163.1	4494.8	-329.7
Over the area	28.6	1.5	87.0	33.7 63%	1671.9	-208.2 -11%

- NOTES :
- 1) Mean temperature is the average of daily dry-bulb temperature
 - 2) "T" is trace, rainfall amount less than 0.1 mm.
 - 3) "blank" is incomplete data.
 - 4) Temperature and rainfall are preliminary data.

Monthly Current Report
Rainfall and Accumulative Rainfall
November 2015

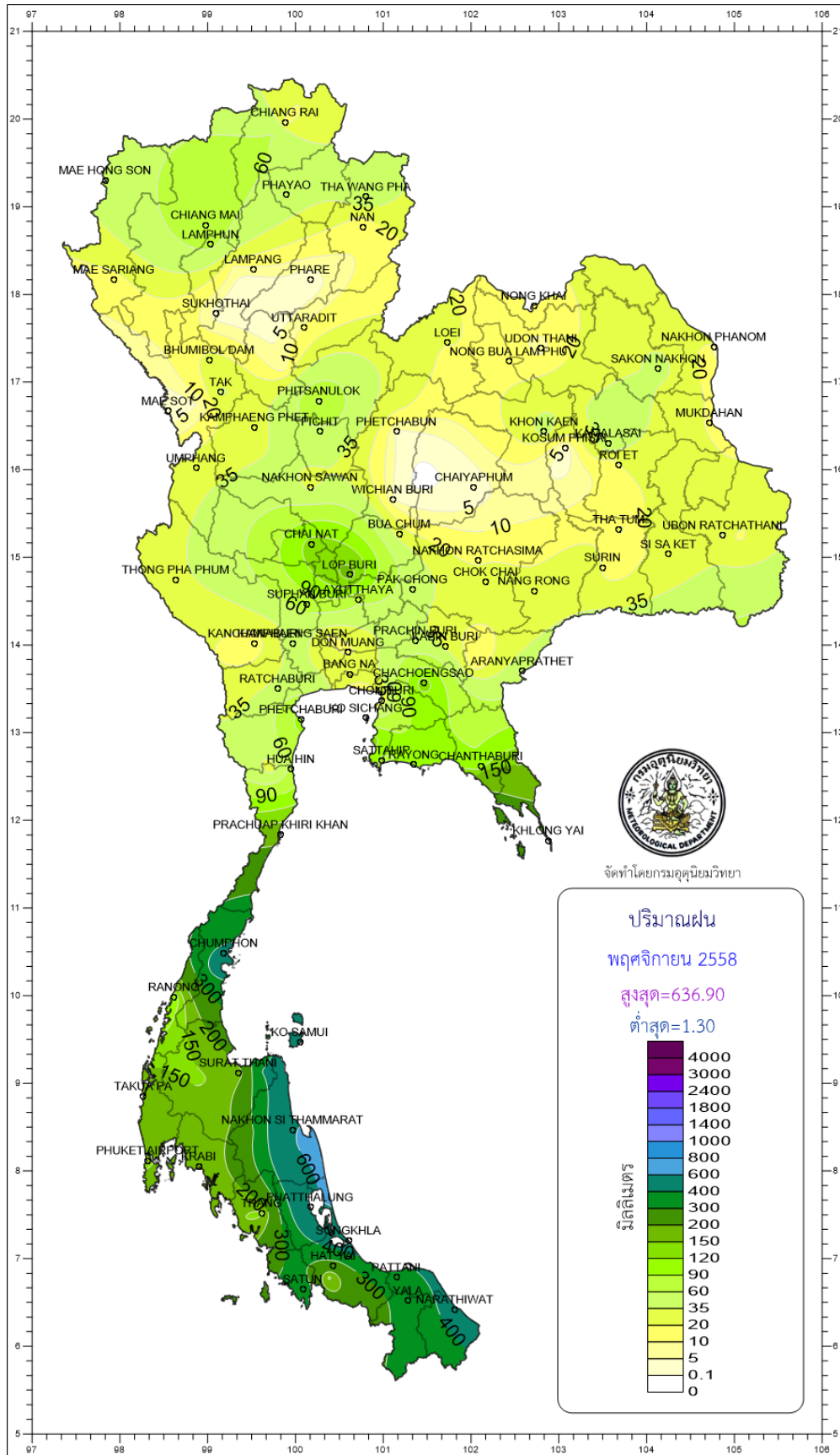
Southern Thailand, east coast

Station	Temperature (°c)		Rainfall (mm)		Accumulative rainfall (mm) Since 1 January	
	Mean	Above or below normal	Actual	Above or below normal	Actual	Above or below normal
Phetchaburi	28.8	1.9	103.2	9.4	788.6	-187.1
Hua Hin	28.8	1.9	65.5	-35.7	620.9	-326.3
Prachuap Khiri Khan	27.6	1.0	178.2	23.7	981.7	-95.1
Chumphon	26.9	0.9	421.4	133.5	1888.2	138.8
Surat Thani	26.5	0.6	169.6	-160.3	1425.5	-67.1
Ko Samui	27.2	0.4	421.9	-84.7	1220.4	-529.4
Nakhon Si Thammarat	26.5	0.4	579.9	-51.3	1697.8	-347.0
Songkhla	27.4	0.5	535.2	-10.7	1469.6	-152.4
Hat Yai Airport	26.6	0.6	263.6	-53.5	1255.8	-202.8
Pattani Airport	26.8	0.5	341.6	-65.0	1208.6	-278.2
Narathiwat	26.7	0.4	436.4	-118.5	1754.0	-141.1
Over the area	27.3	0.9	319.7	-37.5 -10%	1301.0	-199.0 -13%

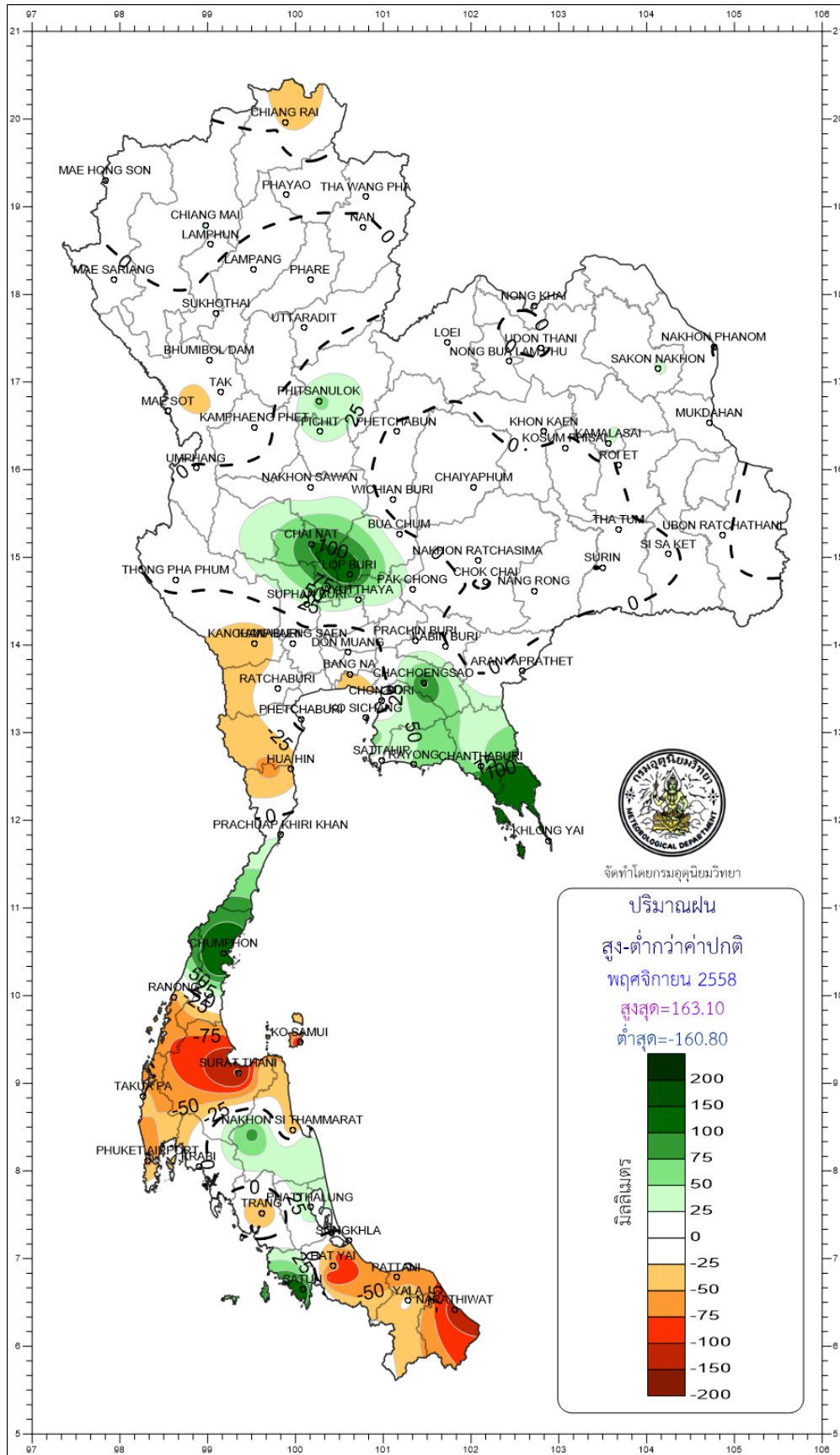
Southern Thailand, west coast

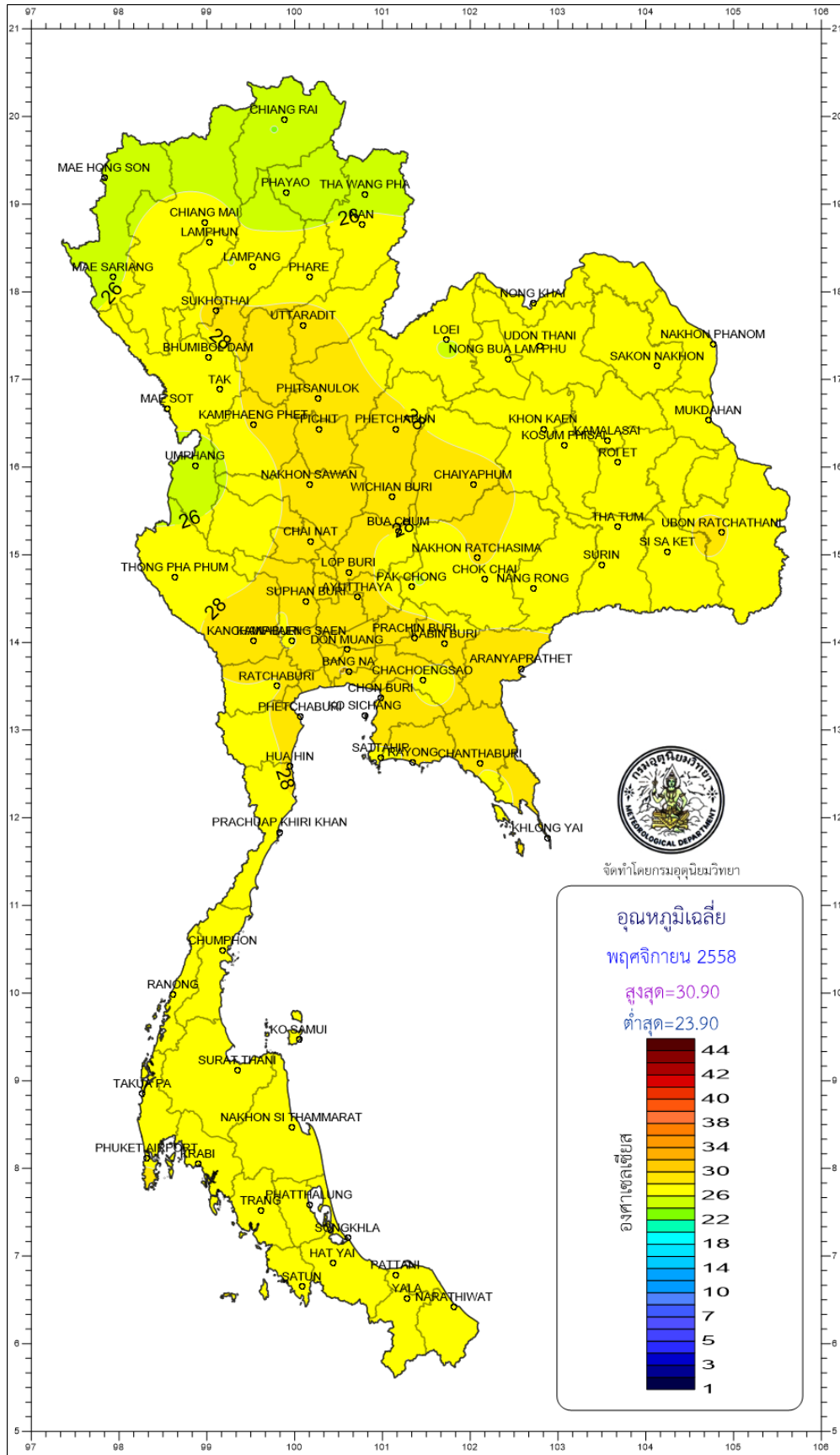
Station	Temperature (°c)		Rainfall (mm)		Accumulative rainfall (mm) Since 1 January	
	Mean	Above or below normal	Actual	Above or below normal	Actual	Above or below normal
Ranong	27.1	0.6	97.9	-54.4	3571.0	-451.9
Takua Pa	27.2	0.7	193.4	-47.5	3273.0	-322.9
Phuket	28.4	0.8	159.0	-18.4	2437.3	290.2
Phuket Airport	27.7	0.8	146.7	-61.1	2452.8	45.2
Ko Lanta	27.7	0.6	163.0	15.9	2133.8	12.8
Trang Airport	26.9	0.5	144.1	-59.8	2073.6	50.5
Satun	27.8	0.9	364.3	140.4	2717.1	524.1
Over the area	27.5	0.7	181.2	-12.1 -6%	2665.5	21.2 1%

- NOTES :
- 1) Mean temperature is the average of daily dry-bulb temperature
 - 2) "T" is trace, rainfall amount less than 0.1 mm.
 - 3) "blank" is incomplete data.
 - 4) Temperature and rainfall are preliminary data.



จัดทำโดยกรมอุตุนิยมวิทยา





จัดทำโดยกรมอุตุนิยมวิทยา

